

Quilters' Guild of East Texas

The Stitchin' Times

November 2021

Volume 40, Issue 11



Inside this
issue:

Guild Minutes	2-3
Quilt Show News	4
Bee News	5
Cuddle Quilts	6
HIVE news	7
Membership	8
Upcoming programs calendar	9
ADS	10

Meeting Info

9:30 am Social &
Check-In
10:00 am Meeting

Map and location on
last page of
newsletter

Refreshments

January: H I K
February: O P Q R
March: N T U V
April: C
May: Pot Luck
Luncheon
June: S
July: B
August: A D J
September: E F G
October: L W X Y Z
November: M
December:
Luncheon



PRESIDENT'S CORNER

Is the Fall season finally here? As I type this, the sky is a bright blue and there is a little nip in the air. I'm a happy girl because the Holidays are close, except for Halloween. I have to be honest, Halloween is not my favorite holiday, basically because I scare easily. Ghosts, Goblins and scary movies give me the creeps, not to mention the nightmares. But, starting November 1, I am all in on the Thanksgiving/Christmas holidays. OK, enough of that. If you were not able to attend the October Guild meeting, you missed a wonderful presentation by the Bizzy Bees. The theme was "The Good, The Bad and the Old". There was Western movie theme music playing in the background, including, of course, the theme music to "The Good, The Bad, and The Ugly". The quilts were beautiful, even the ugly ones had a sense of beauty. There was a Yo-Yo quilt, that was probably the oldest. It was very fragile and made with scraps during the Great Depression. Moving forward, the board is diligently working on our general meeting agenda and hopefully you will enjoy the upcoming meetings.

Take Care,

Sherry Gary
President

be
thankful

QUILTERS GUILD OF EAST TEXAS

The Quilters Guild of East Texas met at First Christian Church on Thursday October 14, 2021. Sherry Gary, President, called the meeting to order at 10:00 a.m.

President - Sherry Gary reported the September minutes were printed in the newsletter and asked if there were any additions or corrections. There were none and they are approved as printed. Facemasks are strongly encouraged but unless the church mandates that they be worn, it is a personal choice. We are in need of an Events Coordinator for the bus trips to Houston and Dallas and the Christmas program.

Treasure - Cecilia Brannon The financial report was posted in the lobby. Any questions should be addressed to Cecilia.

1st Vice President – Corey Starkey reported The Hive today Corey will be demonstrating the use of curved rulers from Sew Kind of Wonderful. She will also submit to the Newsletter what she will be teaching for the next three months.

2nd Vice President- Cathy Woodson The Bizzy Bee small group will be presenting today's program, "The Good, The Bad and The Old", a quilt fashion show. There will be a workshop on Friday taught by Susan Webber entitled "How to Piece a Creative Back". The cost is \$20. November's program will be provided by Nimble Thimbles small group. Marcie Alberts of Options Quilt Shop will present her program, "The Wonders of Paper Piecing". There will be a workshop on Friday making a foundation pieced Scandinavian Snowflake. Marcie will provide the foundations. The cost is \$20 and the kit is discounted to \$8.

December is our Christmas luncheon. It has yet to be determined what we will do for a meal but, will have that information next month. We will play some games so you may want to bring some fat quarters! Bring your Christmas quilts or your red and green quilts for Show and Tell.

January's program will be provided by Piecemakers small group. Sandra Sims will teach Ricky Timms "Convergence" technique workshop on Friday.

Because funds are not available to have national speakers, we will be doing some Zoom speakers. If you have any suggestion, please contact Cathy Woodson.

Membership – Lisa Martin We have about 54 members here today. 84 members have rejoined.

Newsletter – Lucinda Cox Please have everything to her by the 20th.

Social Media – Jackie Ruffing Please send all articles to Lucinda and Jackie in Word.

Bee Keeper - Karen Walters Some Bees have dissolved. If anyone is interested in starting a Bee, please contact Karen. Karen is also in charge of Volunteer hours. Please write down who you are sewing for and your hours. These hours are separate from Cuddle Quilts.

Deal or Duds - Sheryl Moore - The deal - freezer paper to use for English paper piecing auditioning designs, lay it out and press, if you don't like it, reposition and press again.

Sunshine and Shadow – Sheryl Moore – Harold and Dottie Mae Groves both had Covid. Harold recovered but Dottie Mae passed away August 31st. Ro Simmons is in the hospital.

Becky Prior won a blue ribbon at Houston! Melanie Dossey entered at Houston a display only quilt that will be traveling through Quilts.com! Serena Vrnak reports that she is plodding along. Karen Davault is recovering very well from cancer surgery. Sheryl Weaver was back today after a heart attack. Please keep everyone in your prayers.

Cuddle Quilts - Maresa Campbell reported they have 31 quilts ready to distribute! They have started a Bee that will meet on the 3rd Tuesday of the Month in the Craft Room of First Baptist Church in Tyler. They are now accepting fabric and batting donations. They have also redesigned their label to be placed on all the quilts.

Quilt Show 2022 – Cecilia Brannon At the time of our meeting there were 163 days and 14,083,200 seconds until we have our quilt show! It will be located in the Christian Life Center of First Christian Church. Take in will be March 22nd. Judging and setup March 23rd and 24th. Preview night is March 24th you may bring one guest and the show will be March 25th and 26th. Sandy Gard is our Judge this year.

Becky Prior has graciously donated two quilts for our raffle quilts. Everyone will have two chances for the price of one raffle ticket.

Lisa Martin will oversee the Country Store. You may start bringing in material and notions to donate.

Susan Kellam is overseeing Challenge Blocks. These are from two years ago Ruby Red Celebration 40th Anniversary. Please check the newsletter for rules. Entry form due in February, blocks are due in March. April will be the drawing to see who gets to take home sets of blocks made. There are still Challenge Blocks available for \$3.

(continued on next page)

QUILTERS GUILD OF EAST TEXAS (continued)

Susan Webber has submitted the quilt entry forms for the Newsletter. The form is different than it has been in the past to accommodate our thinking out of the box Quilt Show. Please make sure you fill out the new form.

We had several visitors today.

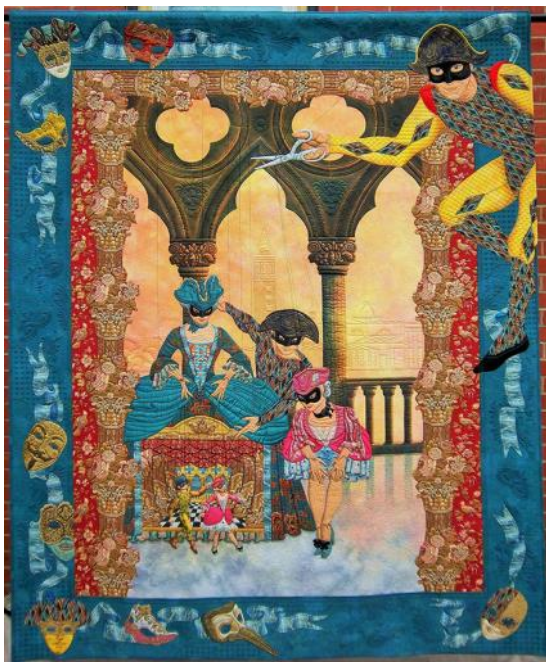
Door prizes were provided by Crafts and Quilting, Sharman's, A Joyful Thread and Options Quilt Shop. Remember to thank our donors! Show and tell by members.

Our program was presented by Bizzy Bees small group, The Good, The Bad and The Ugly. The meeting was adjourned at 11:34.

Respectfully submitted
Susan Branscum, Secretary

Quilt Show Winners!

Becky Prior won a blue ribbon at Houston. Melanie Dossey entered at Houston a display only quilt that will be traveling through Quilts.com. Margaret Cotton won two ribbons in the Canton Show. Congratulations!



Harlequinad

By Becky Prior and quilted by Jackie Brown

First Place Ribbon for Pictorial Category at Houston.



Original art quilt by Melanie Dossey displayed at Houston



Sapphire Stars by Margaret Cotton and quilted by Jo Caraway. It won 2nd place in machine quilt category, best of show machine quilted, and machine merit ribbon



Starburst by Margaret Cotton and quilted by Jackie Ruffing. It won first place in machine quilted category, press award, and machine merit ribbon

JOIN US FOR QGET's 40th QUILT SHOW!!! A RUBY CELEBRATION

MARCH 22-24th Quilt Show Set up
MARCH 24th Preview Night
MARCH 25th and 26th Quilt Show
FIRST CHRISTIAN CHURCH
CHRISTIAN LEARNING CENTER

We are truly blessed to have a church that is so supportive of our Guild. They are renting us the entire Christian Life Center for almost a week so that we can again have our quilt show. Thank you so much to Dave Hill, Facilities Director and Jan Copas for spending time helping us envision how we could use the gymnasium and the classroom areas to rethink how to organize our show. Over the last couple of months, our committee has rethought the layout of the show so that we can get all of our quilts and most of our vendors into the gymnasium. We have found space for everything but a kitchen and eating area. We are planning on eliminating our food service and bringing in food trucks instead. We will have a lounge area for volunteers and vendors. In that area there will be charging stations set up for cell phones and other electronic devices the vendors and volunteers may need.

At this time, we are filling all of our committee chair positions. When they are filled, a list will be put on the Quilt Show page of our website and published in our next newsletter. Please feel free to contact one of these chairpersons or one of the Quilt Show Chairmen if you would like to work with a committee.

Since this will be our 40th show, we are going to continue the theme of the Ruby representing the 40th anniversary. If you made a red and white quilt that you never got to enter because we had to cancel the 2020 and 2021 shows, please get it out and plan on entering it now!! The gymnasium has a track running around forming an upper level. We will be able to display quilts from this upper level as well as the gymnasium floor. Just think how beautiful it will be to enter the gym and see all the beautiful quilts displayed for 2 stories!! The form and instructions for entering can be found on the Quilt Show page on our website as well as here in this newsletter.

We are also very lucky to have two quilts that were donated by Becky Prior, an award winning quilter and member of our guild. We have decided to use these for our raffle quilts. This year, your raffle ticket will get you two chances to win one of these beautiful art quilts!!

At our next meeting you will be able to pick up your raffle tickets and show pins.

Quilt Show Committee Chairs

Susan Merrill	Cecilia Brannon	Jackie Ruffing
Susan Webber	Rhonda Chapman	

Country Store

Accepting Country Store Donations Now!

I know it seems like we JUST had the Country Store sale, but we are already accepting donations for the next one! In order to build up our inventory for our March 2022 Quilt Show Country Store, please start bringing us your unused, unwanted, unloved sewing related items. For November and December, if you bring your donations to the guild meeting, you can just put them directly into my car in front of the church. (It will have a sign on the back so you know which one it is.) Just come inside to get the keys and you can load me up with all your valuables.

Please price your items in advance as usual, for pricing guidelines please refer to the list in the [August 2021 newsletter](#). You are welcome to bring your donations to me at any other time during the month, just email me at lisamartinkaz@hotmail.com to arrange to drop them off.

With your help and donations we will have a fabulous Country Store next year!

Lisa Martin

Bee News

The new Cuddle Quilt Bee had their first meeting and it was a big success! Many Guild members came and it sounds like they had a really good time. If you don't feel like bringing a sewing machine, contact Maresa ahead of time and see if she has a binding you could hand sew or fabric that needs cutting. There are always things to do to help with this worthy cause.

We have a new member that would like to start a Bee in her home in Tyler. We will be meeting to work on it. When it is ready to start, look for information in the newsletter and announcements at Guild meetings. The Bee Creative Bee is on hiatus until January.

Our open Bees that are meeting now are:

Bizzy Bees – meets at Colonial Baptist Church, every Thursday except Guild week, at 9 am.

Cuddle Quilt Bee - 3rd Tuesday of the month, First Baptist Church, 10 am – 3pm

GLOB - 1st Thursday each month, Sharman's, 9:30 am – 12:00 pm

Nine Patches – 1st Thursday each month, members' homes, 9:30 am, Cathy Woodson is the contact to find meeting place, and is in Directory.

Sew Crazy's – 3rd Saturday of the month, 10 am – 5 pm. Meets at someone's home so Contact Mendy Britton for address.

Piecemakers – Meets 3rd Thursday each month at 10 am, Hideaway Community Center.

Wooly Ewes – Meets 1st Thursday each month at A Nimble Thimble, 1 pm

Quilt of Valor – 4th Tuesday each month at Crafts and Quilting, 10 am.

Volunteer Hours

Each month at Guild meetings, there is a sheet on the entrance table to record hours for any item that has been sewn and given to a charitable organization. These hours are kept for maintaining our 501c3. We need to know what items were made and the charity they were given to, as well as the hours it took to make the items. Please stop by the table and record your hours.

Beekeeper, Karen Walters

ATTENTION Everyone

In Search of LOST Quilts

Camilla Foppes gave a Longarm quilter two quilts to be quilted. Camilla passed away from Covid before collecting the two quilts. Her family is trying to locate the Longarm quilter to get the quilts and finish them for her sons for Christmas.

Please contact Marilyn with any information.

Marilyn V'Soske
3500 S Vine Ave apt 103
Tyler, Texas 75701
903-981-3280
mvsoske@hotmail.com

Please pass this information to your friends.



Quilters Anonymous

CUDDLE QUILT NEWS

Hello Sew Friends!

I hope your having a sew wonderful month! Fall is in the air and I am ready for some cooler weather.

It was really good to see everyone at the October Guild Meeting. Cuddle Quilts collected 11 finished quilts and 4 pieced tops ready for quilting at the meeting. That makes a total of 42 quilts ready for donations. The 4 pieced tops have been distributed to long armers for quilting. It's sew exciting as we are getting ready to make our first donation because the stack is getting high in my extra bedroom!

On October 18th, the Cuddle Quilts Bee had a great gathering. We had 8 guild members present. The group was able to make some great progress on some quilt kits and had a good time while doing it. Lisa Martin and I would love for you all to BEE there too for all the fun! Please join us on the third Tuesday of the month at 10:00 a.m. at First Baptist Church downtown in the Craft Room on the 4th floor. The next meeting is scheduled for November 16th. If you are interested in coming, please contact me at 903-245-5164 for more details.

I am excited to share that Cuddle Quilts has planned their first lunch and shopping excursion for November 19th! We will dine together at Wades in Chandler and then we will take a trip to Needle Niche in Athens where will play together. I don't know about you, but eating together and then shopping together is one of my favorite things to do besides sewing together.

Cuddle Quilts is accepting fabric and batting donations. Your donations are appreciated as it will help Cuddle Quilts to continue to serve others in our community by making quilts for local charities. If you would like to donate fabric or batting, you may bring your donations to the Guild Meetings or to the Cuddle Quilt Bee when it meets at First Baptist Church. If you need to make other arrangements for drop-off, call me and we can discuss.

I am truly thankful for all those who are giving of their time and talents while working on the quilts. It's fun making memories with you! Take care and see you at the next Guild Meeting or at the quilt shop (Big Grin!!!).

Maresa Campbell





Hive News



November

October's HIVE meeting was curvy! Several guild members learned how to do curved piecing and made beautiful pieced lanterns. They all plan to make more matching blocks for larger projects and I can't wait to see the results!

November's HIVE will take place directly after the guild meeting on November 11th, starting at 12:30 in the Family Life Center of the same church. All quilters are welcome, no matter your skill level or length of time as a guild member, but new guild members are especially encouraged to attend.

This month we will be learning general piecing including flying geese by making this cute Christmas package, complete with a bow. To make one block you will need to bring one 10" square of Christmas fabric, two smaller pieces of coordinating fabric, and background fabric. Please bring starch or pre-starch your fabric. Also bring your sewing machine and normal sewing supplies, including mat, ruler and rotary cutter. (Irons are provided.) If you would like to make a table runner or quilt just bring enough extra fabric for your project.

Corey Starkey

1st Vice President



Membership News

Our 2021-2022 membership drive is officially over and I will be emailing all our guild members a new, updated roster of our members. If you know a previous member who didn't get the chance to renew, please encourage them to do so, either in person at a meeting or by mail. Thanks to all who did renew, and I'm looking forward to an active and exciting year!

Lisa Martin
Membership Chairman

October Workshop Update

Pieced Backing Workshop

October's workshop, taught by Susan Webber, had the quilters learning how to put teeny, tiny pieces together in a crumb quilt type of way to make a unique quilt backing. Susan showed how she sorted her scraps and chose to sew them together, starting with the smallest pieces, and growing the project from there. Maresa, Lisa, and Susan made such interesting works of art in just a short amount of time which, when used as a backing, will make their quilt even more special. Thanks so much to Susan for teaching this workshop, and to Janene Auld for being such a wonderful hostess.



Newsletter Information

Deadline for **December** Newsletter:

November 20, 2021

Ad Rates

1/8 page	\$5 per month (Guild Member)
	\$10 per month (non-Guild Member)
1/4 page	\$25 per month
1/2 page	\$50 per month

ADS WILL NOT BE PUBLISHED UNTIL PAYMENT HAS BEEN REMITTED. Thanks!

Submit information for the next month's newsletter to:

Lucinda Cox

Lucinda@yellowrosequiltandstitch.com

Submit information for the website to:

Jackie Ruffing

ggetxyler@yahoo.com

www.qgetx.org

Available ONLINE!
*Color Newsletter
*Class Supply List
*pictures

Board Members

President	Sherry Gary	903.749.1611 slynngary@comcast.net
1 st VP	Corey Starkey	661.203.2092 coreyquilter@gmail.com
2 nd VP	Cathy Woodson	903.570.8706 woodsonc15@gmail.com
Secretary	Susan Branscum	903.521.6711 susanbranscum@gmail.com
Treasurer	Cecilia Brannon	903.521.6569 celiabannon@yahoo.com
Quilt Show	Susan Merrill and committee (Melanie Dossey, Rhonda Chapman, Cecilia Brannon, Jackie Ruffing, Susan Webber, Paula Park)	

Programs & Workshops

I certainly enjoyed the “quilt fashion show” presented by the *Bizzy Bees* at our October meeting. I appreciate their willingness to support the Guild by providing a program and workshop.

November- Marcie Alberts of Options Quilt Shop will present her program, “The Wonders of Paper Piecing”. There will be a workshop on Friday making a foundation pieced **Scandinavian Snowflake**. It is a lovely small round project using the Judy Niemeyer method of paper piecing. If you have been intimidated by paper piecing, this is a great small project to get you started. A picture of the project as well as the supply list are on the QGETX.org website. Marcie will provide the foundations. The cost is \$20 and the kit is discounted to \$8.

In **December** we will have our Christmas luncheon. No program is scheduled except for a LARGE SHOW & TELL. Please bring any Christmas quilts you have as well as red and green quilts. Even if we have seen them before—we don’t remember anyway! Ha-ha! The details of the meal will be announced at the November meeting. We will be playing some games after we eat so bring some fat quarters to play. Wear an ugly sweater or your best Christmas garb and HAVE SOME FUN!

January’s program will be provided by the *Piecemakers* small group. *Sandra Sims* will teach Ricky Tim’s “**Convergence**” technique in a workshop on Friday. This should be very interesting! We have all heard of him and seen his innovative work but I have not taken one of his classes. I am ready to sign up and learn his technique!

Cathy Woodson, 2nd Vice-President Programs
903-570-8706

Future Programs and Workshops

<u>Date</u> <u>Program Speaker</u>	<u>Date</u> <u>Workshop</u>	<u>Cost</u>
Nov 11 10 a.m. • Paper Piecing—Paint by Numbers for Quilting—Marcie Alberts	Nov 12 9am - 4pm • Scandinavian Snowflake Table Topper	\$20 + \$8 optional kit fee
Dec 9 10 a.m. • Christmas Party	None	
Jan 13 10 a.m. • Piecemakers—Vicki Burt (Topic TBD)	Jan 14 9am - 4pm Ricky Tims Convergence/Sandy Sims	TBD
Feb 10 • Big Love, Texas Cotton—Theresa Wong (Zoom)	None	
Mar 10 • Antique sewing Items—Susan Kellum	None	
Apr 14 • Susan Edmonson		

QGET PROGRAMS AND WORKSHOPS

Programs are offered the second Thursday of each month following the QGET business meeting at First Christian Church, Tyler. There is no charge to attend a program. The business meeting begins at 10am and the Program generally starts around 11. Programs last 1-1.5 hours.

Workshops vary in length from 1/2 day to a full day. They are held on the second Friday of the month. Workshops are generally \$20 for members who sign up at the meeting the day before the workshop. Cost may vary with the length of the workshop. Workshops begin at 9am. Participants are encouraged to arrive by 8:30 to set up machines and supplies if necessary. Workshops are in the conference room at First Christian Church, Tyler. This room is located in the building behind the main sanctuary building. It is next to the scout room by the doors that lead out into the parking lot between the two buildings. Please note that these doors lock automatically and you may have to go around to the main entrance to this building to get in. When we have full day workshops, you are responsible for your lunch. You may bring a lunch or order from one of the restaurants close by.

ADS



Longarm Quilting
Service
Custom Quilt Creation

APQS Millie with
Computerized
Quilting

Lucinda Cox, Owner
512-633-7061
www.yellowrosequiltandstitch.com
Lucinda@yellowrosequiltandstitch.com



Heartfully Cheryl

Handmade Gifts

Cheryl Fillion

www.etsy.com/shop/HeartfullyCheryl
HeartfullyCheryl.blogspot.com



For Sale-
Bernina 830 embroidery machine with module and accessories when purchased from A Nimble Thimble in Tyler. Includes Grace Quilting Frame with platform, Microsoft tablet with QuiltMotionPantostacker software plus USB with the Pantostacker software on it. Contact—Karen Davault



November Birthdays

               	<p>6 —Debbie Tisdale</p> <p>7 – Maresa Campbell, Mitzy Pearson</p> <p>8—Wanda Nabors</p> <p>9—Marilyn Hardy</p>	<p>10—Peggy Boultinghouse</p> <p>11—Frieda Pickett</p> <p>14—Barbara Foy</p> <p>16—Vickie Burt</p> <p>19—Corey Starkey</p>	<p>20—Nancy Gibson</p> <p>28—Jan Janes</p>	    
               				

QUILTERS' GUILD OF EAST TEXAS

PO Box 130773

Tyler TX 75713-0773



Notes from the Stash

If you UNSUBSCRIBE to our guild's emails (CONSTANT CONTACT), "we" cannot re-subscribe you! YOU must contact Lucinda Cox or Celia Brannon so that we can send you a link to RE-SUBSCRIBE!

Location for Quilters' Guild of East Texas

1st Christian Church of Tyler
 Corner of South Broadway and Loop 323 for
 Quilters' Guild of East Texas.
 First Christian Church
 4202 South Broadway
 Tyler, Texas

Refreshments, Show & Tell

Program Quilt Holders & Folders, Door Greeters

January	H, I, K
February	O, P, Q, R
March	N, T, U, V
April	C
May	Pot Luck Luncheon
June	S
July	B
August	A, D, J
September	E, F, G
October	L, W, X, Y, Z
November	M
December	Luncheon

